

# Coaxial Low Pass Filter

## BLP-21.4+

50Ω DC to 22 MHz

### Maximum Ratings

Operating Temperature	-55°C to 100°C
Storage Temperature	-55°C to 100°C
RF Power Input	0.5W max.

Permanent damage may occur if any of these limits are exceeded.

### Features

- rugged shielded case
- other standard and custom BLP models available with wide selection of fco

### Applications

- test equipment
- lab use
- video equipment



CASE STYLE: FF55

Connectors	Model	Price	Qty.
BNC	BLP-21.4+	\$32.95 ea.	(1-9)

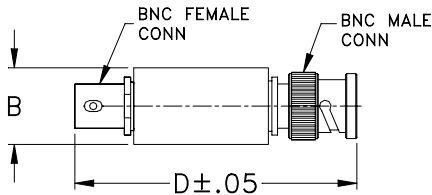
+ RoHS compliant in accordance with EU Directive (2002/95/EC)

The +Suffix has been added in order to identify RoHS Compliance. See our web site for RoHS Compliance methodologies and qualifications.

### Low Pass Filter Electrical Specifications

PASSBAND (MHz)	fco (MHz) Nom.	STOPBAND (MHz)		VSWR (:1)	
		(loss > 20 dB)	(loss > 40 dB)	Passband Typ.	Stopband Typ.
DC-22	24.5	32-41	41-200	1.7	18

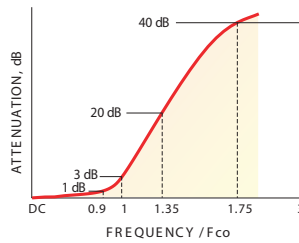
### Outline Drawing



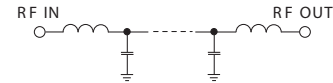
### Outline Dimensions (inch/mm)

B	D	wt
.54	2.59	grams
13.72	65.79	40.0

### typical frequency response

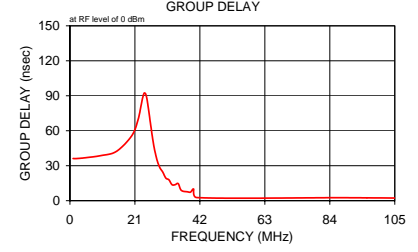
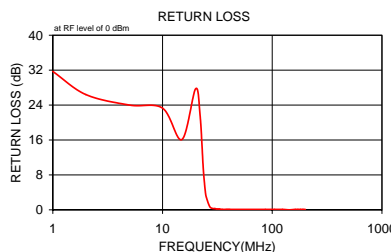
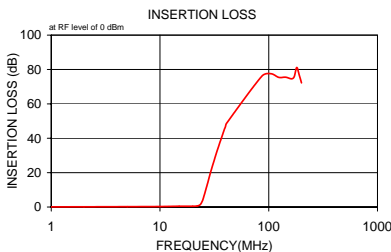


### electrical schematic



### Typical Performance Data

Frequency (MHz)	Insertion Loss (dB)		Return Loss (dB)	Frequency (MHz)	Group Delay (nsec)
	$\bar{x}$	$\sigma$			
1.00	0.10	0.1	31.7	1.00	36.16
2.00	0.12	0.0	26.4	2.00	36.11
5.00	0.21	0.1	24.0	5.00	36.80
10.00	0.29	0.1	23.3	10.00	38.69
15.00	0.45	0.1	16.1	15.00	42.25
20.00	0.45	0.1	27.7	20.00	55.73
22.00	0.60	0.1	21.6	22.00	69.40
23.50	1.46	0.4	9.6	23.00	81.70
24.50	3.45	1.0	4.4	23.50	88.29
25.00	4.95	1.2	3.0	24.00	92.34
27.00	12.37	1.5	0.7	24.50	91.46
29.00	19.53	1.4	0.3	25.00	85.66
30.00	22.77	1.4	0.3	26.00	66.76
31.00	25.77	1.3	0.2	27.00	48.88
32.00	28.62	1.3	0.2	28.00	36.30
33.00	31.31	1.3	0.2	29.00	28.75
35.00	36.30	1.2	0.1	30.00	24.49
38.00	42.86	1.3	0.1	31.00	19.40
39.00	45.08	1.1	0.1	32.00	17.88
40.00	46.77	1.0	0.1	33.00	13.73
41.00	48.73	1.0	0.1	34.00	13.70
86.50	76.16	2.0	0.1	35.00	14.63
105.00	77.54	4.3	0.1	36.00	8.86
124.00	75.42	0.6	0.1	38.00	7.64
143.00	75.51	1.8	0.0	39.00	7.39
162.00	74.57	3.5	0.1	40.00	9.97
171.50	75.79	4.4	0.1	41.00	2.67
181.00	81.15	8.2	0.1	86.50	2.56
190.50	76.97	3.2	0.1	96.00	2.44
200.00	72.23	2.4	0.1	105.00	2.28



P.O. Box 350166, Brooklyn, New York 11235-0003 (718) 934-4500 Fax (718) 332-4661 The Design Engineers Search Engine Provides ACTUAL Data Instantly at [minicircuits.com](http://minicircuits.com)

IF/RF MICROWAVE COMPONENTS

For detailed performance specs & shopping online see web site

Notes: 1. Performance and quality attributes and conditions not expressly stated in this specification sheet are intended to be excluded and do not form a part of this specification sheet. 2. Electrical specifications and performance data contained herein are based on Mini-Circuit's applicable established test performance criteria and measurement instructions. 3. The parts covered by this specification sheet are subject to Mini-Circuits standard limited warranty and terms and conditions (collectively, "Standard Terms"); Purchasers of this part are entitled to the rights and benefits contained therein. For a full statement of the Standard Terms and the exclusive rights and remedies thereunder, please visit Mini-Circuits' website at [www.minicircuits.com/MCLStore/terms.jsp](http://www.minicircuits.com/MCLStore/terms.jsp).

REV. B  
M108294  
BLP-21.4+  
090818