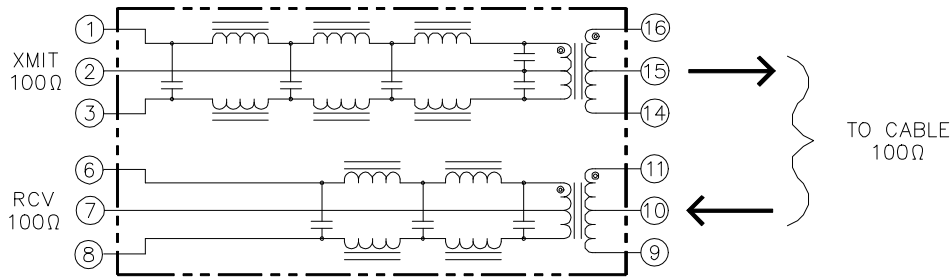


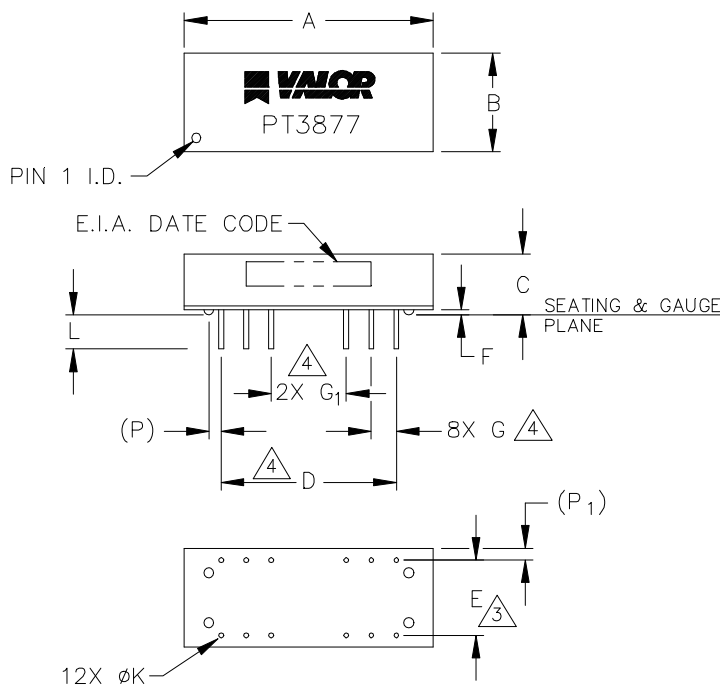
Electrical



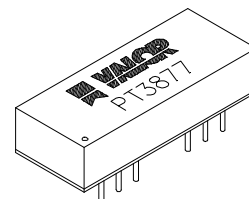
ELECTRICAL SPECIFICATIONS @ 25°C

	TRANSMIT	RECEIVE
TYPE	: 7 POLE BALANCE L.P.	: 5 POLE BALANCE L.P.
CHARACTERISTIC IMPEDANCE	: 100Ω	: 100Ω
CUT-OFF FREQUENCY	: 17MHz ± 1MHz	: 17MHz ± 1MHz
INSERTION LOSS (1-10MHz)	: .8dB MAX	: .8dB MAX
RETURN LOSS (5-10MHz)	: 15dB MIN	: 15dB MIN
ATTENUATION @ 20MHz	: 7dB MIN	: 6dB MIN
@ 25MHz	: 19dB MIN	: 14dB MIN
@ 30MHz	: 32dB MIN	: 20dB MIN
@ 40MHz	: 35dB MIN	: 31dB MIN
DCR	: 1.0Ω MAX (1-2)	: 1.0Ω MAX (6-7)
DCR	: .4Ω MAX (14-15)	: .4Ω MAX (9-10)
HI POT	: 2000VRMS FOR 1 MINUTE (1-2-3 TO 14-15-16)	: 2000VRMS FOR 1 MINUTE (6-7-8 TO 9-10-11)
CROSSTALK (XMIT-RCV)	: 30dB MIN 1-10MHz	
HI POT (XMIT-RCV)	: 200VRMS FOR 1 MINUTE (1-2-3 TO 6-7-8) (1-2-3 TO 9-10-11) (6-7-8 TO 14-15-16)	

Mechanical



DIM	MILLIMETERS		INCHES	
	MIN	MAX	MIN	MAX
A	25.10	25.60	.988	1.008
B	9.86	10.36	.388	.408
C	5.92	6.43	.233	.253
D	17.78 (TP)		.700 (TP)	
E	7.49	7.75	.295	.305
F	.25	.76	.010	.030
G	2.54 (TP)		.100 (TP)	
G ₁	7.62 (TP)		.300 (TP)	
øK	.38	.64	.015	.025
L	3.18	3.81	.125	.150
(P)	3.25	4.27	.128	.168
(P ₁)	.71	1.73	.028	.068



WEBSITE www.valorinc.com E-MAIL marketing@valorinc.com

NORTH AMERICA
tel 1-800-31 VALOR
fax 619-537-2525

ASIA/PACIFIC
tel +852-2953-1000
fax +852-2953-1333

EUROPE
tel +44-1727-824 875
fax +44-1727-824 898